

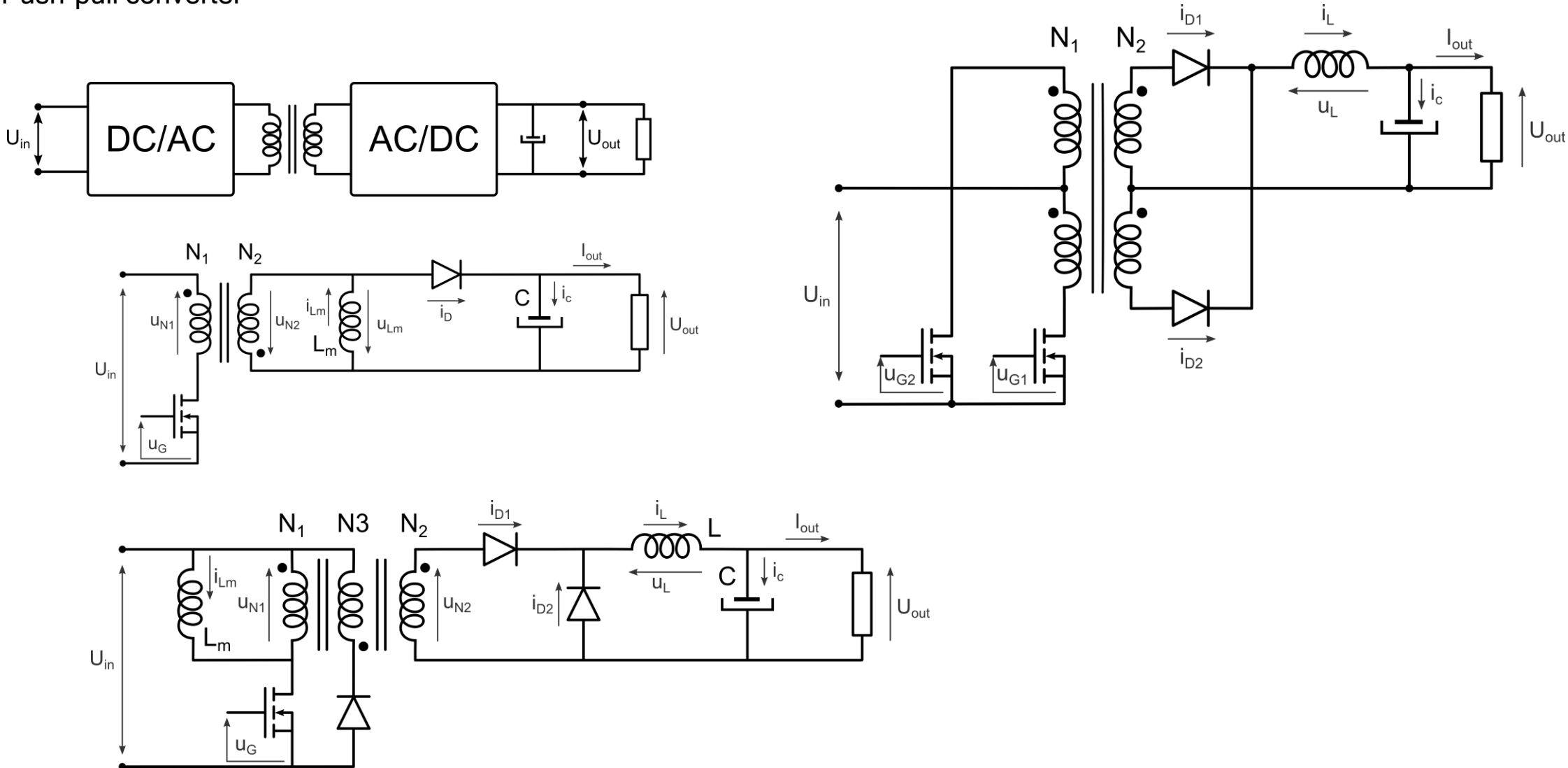
# ISOLATED POWER SUPPLIES

-continued-

# DC POWER SUPPLY

Isolated (DC) power supplies

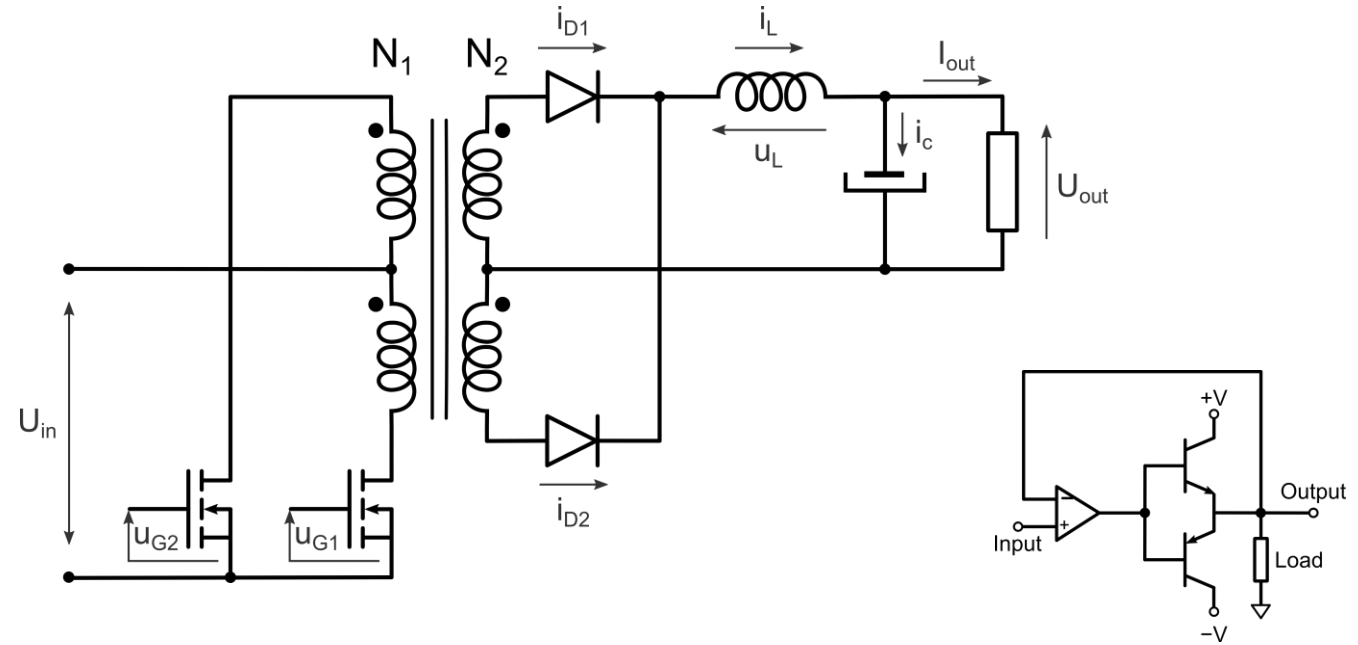
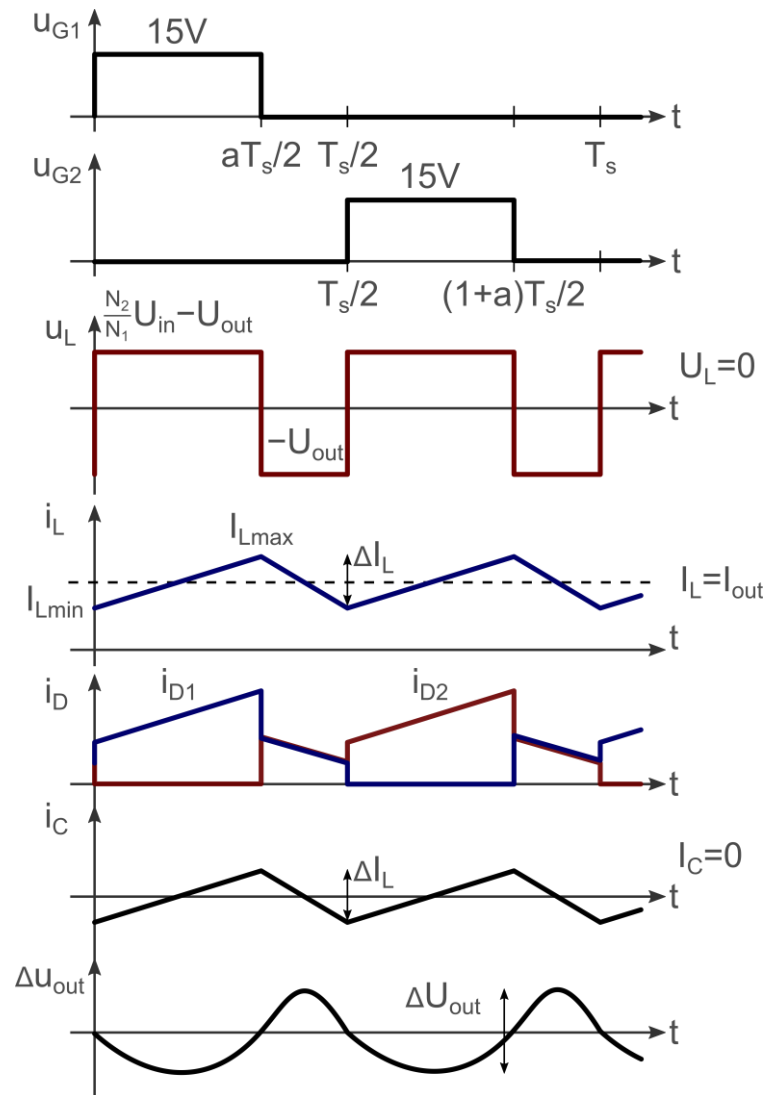
Push-pull converter



# DC POWER SUPPLY

## Isolated (DC) power supplies

### Push-pull converter



$$U_L = 0 \Rightarrow \left(\frac{N_2}{N_1} U_{in} - U_{out}\right) \cdot \frac{T_s}{2} a = U_{out} \cdot (1 - a) \frac{T_s}{2} \Rightarrow \frac{U_{out}}{U_{in}} = \frac{N_2}{N_1} a$$

# DC POWER SUPPLY

Isolated (DC) power supplies

Push-pull converter

